

# Retail Space For Lease

FEATURED PROPERTY FEATURED PROPERTY FEATURED PROPERTY FEATURED PROPERTY



## 2830 North Ave #1B, Grand Junction, CO

### *Features*

- City Market Anchored Center
- Central Location on North Ave
- Ample Parking
- 26,000 SF, Two Sunken Loading Docks, and One 12'x12' at Grade Overhead Door
- \$6.00/SF + NNN

**Sid Squirrell, CCIM**

email: [sid@gjcommercial.com](mailto:sid@gjcommercial.com)

Direct: 970-263-3947

Fax: 970-242-1254

[www.gjcommercial.com](http://www.gjcommercial.com)

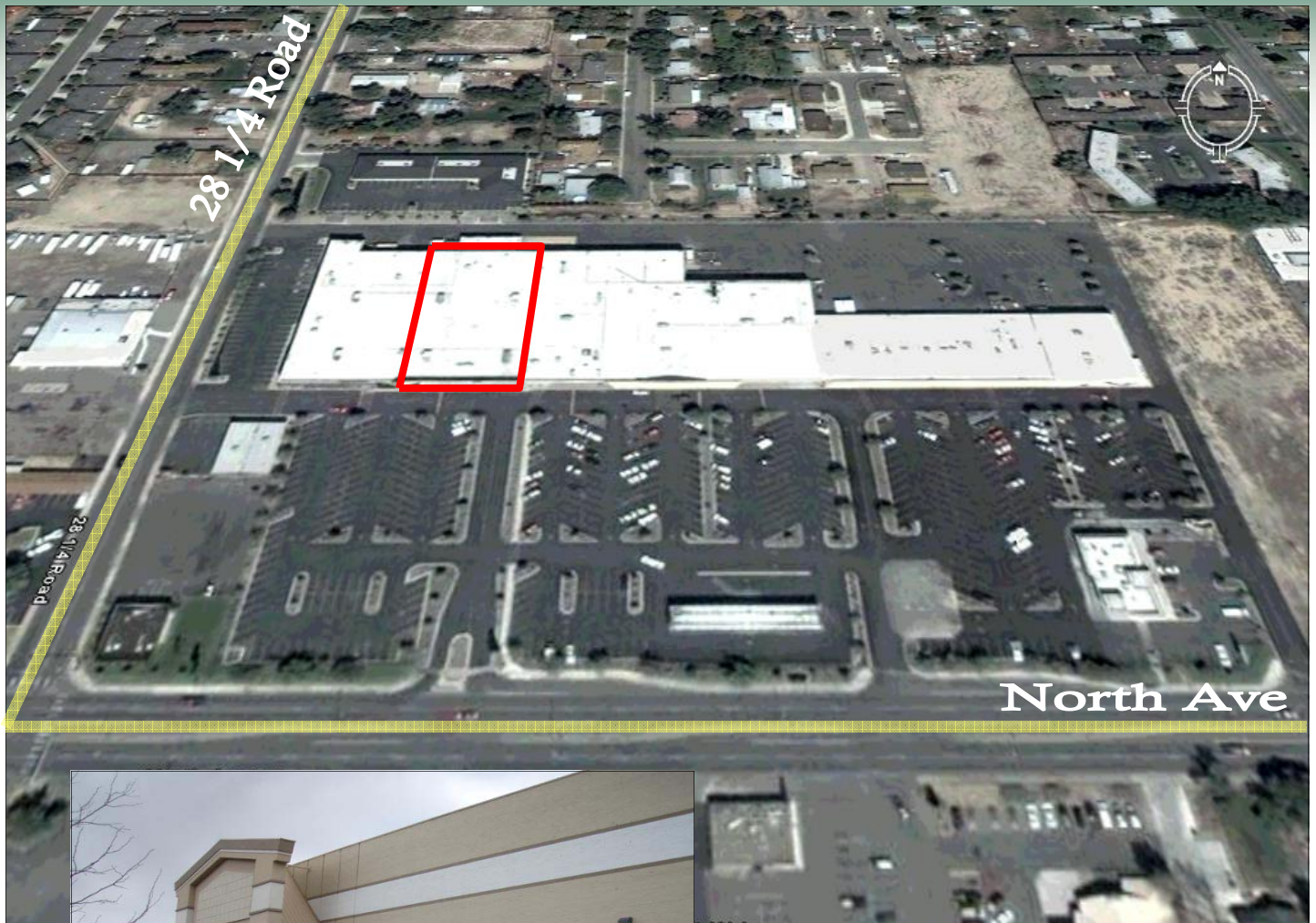


244 North 7th Street • Grand Junction, CO 81501

970/241-2909 • fax 970/241-6223

1-800-695-0539 • [www.braycommercial.com](http://www.braycommercial.com)

*Sales Leasing Management Marketing Acquisition Development Consulting*



## 2830 North Ave #1B

**Sid Squirrell, CCIM**

email: [sid@gjcommercial.com](mailto:sid@gjcommercial.com)

Direct: 970-263-3947

Fax: 970-242-1254

[www.gjcommercial.com](http://www.gjcommercial.com)



244 North 7th Street • Grand Junction, CO 81501

970/241-2909 • fax 970/241-6223

1-800-695-0539 • [www.braycommercial.com](http://www.braycommercial.com)

*Sales Leasing Management Marketing Acquisition Development Consulting*